

DIMENSÕES (mm): **428 x 470 x 595**  
 POTÊNCIA (W): **2400** [total] | **2400** [cuba] | **2700** [caldeira]  
 PRODUÇÃO (cestos/h): **30**  
 CESTOS (mm): **350 x 350**  
 ÁREA ÚTIL (mm): **210** | PESO (Kg): **36**  
 CAPACIDADE DA CUBA (L): **10** | CAPACIDADE DA CALDEIRA (L): **3**

- Carroçaria e caldeira em aço inoxidável
- Braços e injetores em materiais compósitos, facilmente removíveis
- Porta de parede dupla
- Controle eletromecânico
- Painel de comandos extraível

**MAGNUS AF 45.30****4020156**

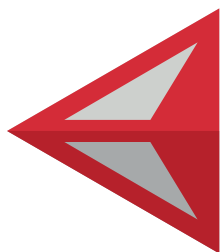
DIMENSÕES (mm): **503 x 571 x 760**  
 POTÊNCIA (W): **3550**  
 PRODUÇÃO (cesto/h): **30**  
 CAPACIDADE DA CUBA (m): **18**  
 PESO (Kg): **55**

- Carroçaria em aço inoxidável
- Abastecimento de água automático
- Doseador abrillhantador
- Dispositivo de segurança na porta

**MAGNUS AF 50.35 EASY MN****4020200**

DIMENSÕES (mm): **572 x 630 x 814** ALTURA ÚTIL (mm): **350**  
 POTÊNCIA (W): **3550** PESO (Kg): **60**  
 VOLTAGEM (V): **230**  
 FREQUÊNCIA (Hz): **50**  
 PRODUÇÃO (cestos/h): **30 - 40**  
 CAPACIDADE DA CUBA (l): **20**

- Carroçaria de parede dupla parcial
- Carroçaria, braços e injetores em aço inoxidável
- Cuba estampada
- Dispositivo de segurança na porta

**TECNIDELTA**

## MAGNUS TR 3000

4020169

DIMENSÕES (mm): **2400 x 770 x 1710**  
POTÊNCIA (W): **33600**  
PRODUÇÃO (pratos/h): **4140 - 3600 - 2610**  
PRODUÇÃO (copos/h): **5750 - 5000 - 3625**  
PRODUÇÃO (tabuleiros/h): **1380 - 1200 - 870**  
PRODUÇÃO (cestos/h): **230 - 200 - 145**  
ÁREA ÚTIL (mm): **495 (PRATOS) | 470 (COPOS)**  
MOTOR DE TRACÇÃO (KW): **0,25**

ENXAGUAMENTO (K/W): **18**  
CONSUMO DE ÁGUA (l/h): **345**



## MAGNUS AH 800

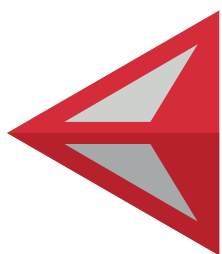
4020540

DIMENSÕES (mm): **760 x 793 x 1485**  
POTÊNCIA (W): **6750**  
VOLTAGEM (V): **400**  
ALTURA ÚTIL (mm): **420**  
DURAÇÃO DO CICLO DE LAVAGEM (s): **90 - 120**  
DIMENSÃO DO CESTO (mm): **500 x 500**  
CONSUMO DE ÁGUA (l/ciclo): **2,5**  
PESO (Kg): **55**

- Carroçaria, braços e injetores em aço inoxidável
- Cuba estampada
- Abastecimento de água automático
- Enxaguamento com água quente
- Doseador abrillantador



TECNIDELTA



**Maq Lavar WF 350 - 6.0.095.0090**  
**WASHING MACHINE WF 350**



**TYPE 3600**  
**Glasswasher basket 35x35**  
**Single skinned**  
**Electromechanical controls**

REV.01  
(03/2023)

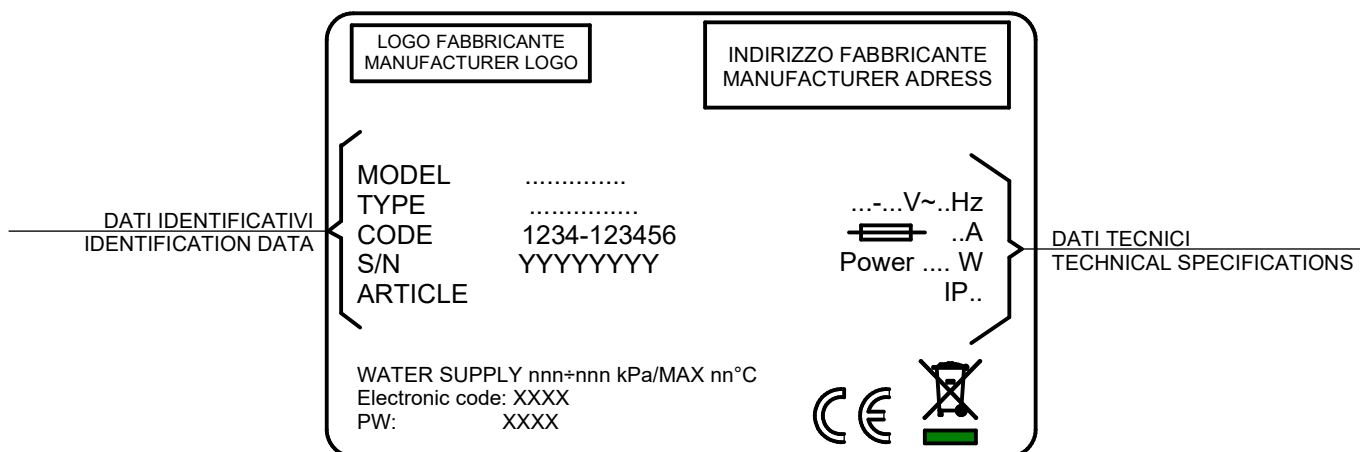
**INFORMAZIONI GENERALI**

- A. Il catalogo serve per richiedere con esattezza le parti di ricambi, in base al **MODELLO** indicato nella matricola della macchina. Negli ordini indicare la posizione, il codice, la descrizione e la quantità delle parti di ricambio;
- B. I disegni delle parti di ricambio sono indicativi e NON rappresentano il pezzo reale;
- C. I dati contenuti in questo catalogo sono indicativi e possono essere soggetti a modifiche senza preavviso.

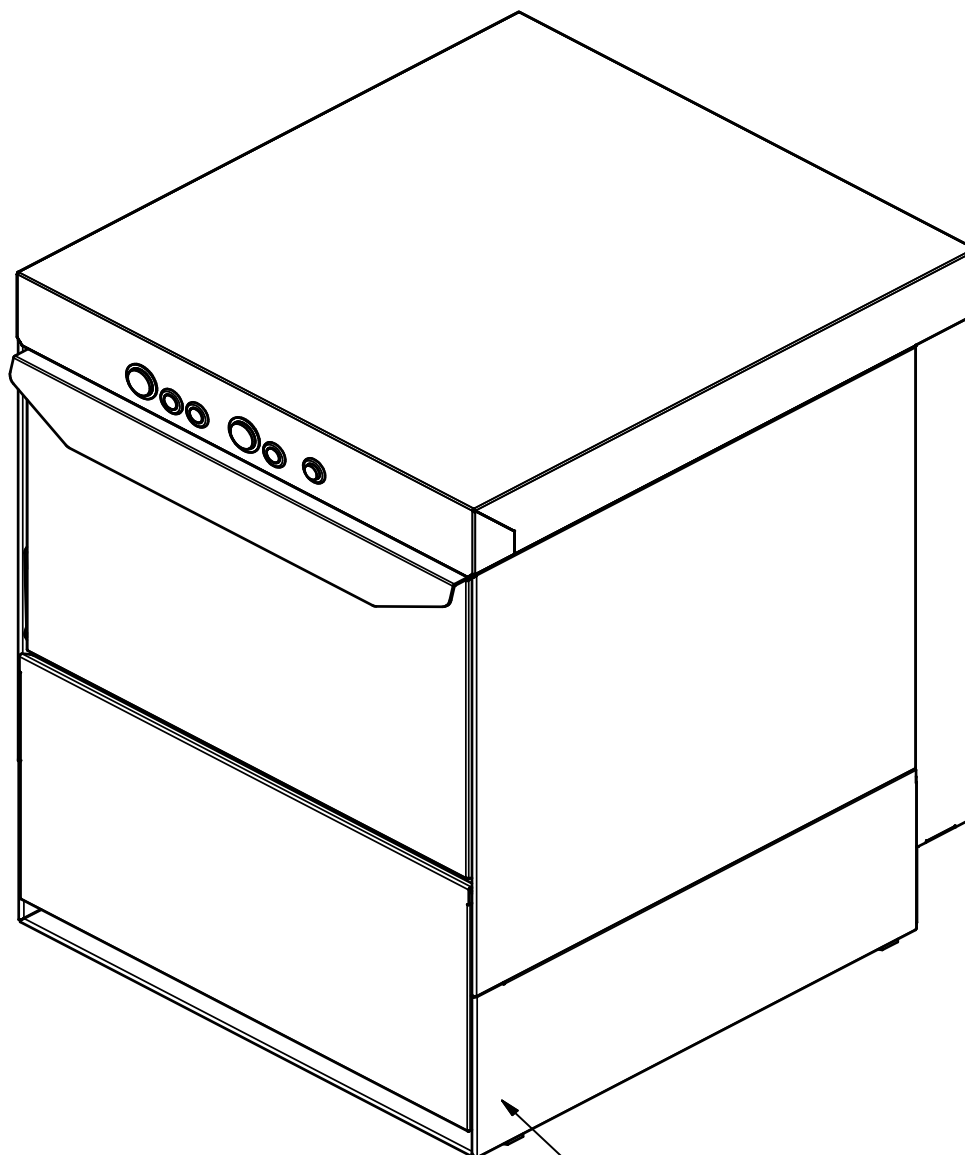
**GENERAL INFORMATION**

- A. This catalog is used to order exactly the right spare parts, according to the **MODEL** indicated on the identification plate of the machine. When ordering, specify the position, the code, the description and the quantity of spare parts;
- B. The spare parts drawings are general and DO NOT represent the real component;
- C. The contents of this catalog are general, and can undergo changes without prior notice.

**LETTURA DELLA MATRICOLA MACCHINA - READING OF MACHINE ID NUMBER**



Os elementos deste desenho podem ser alterados sem aviso prévio.  
This drawing may be altered without previous notice.



MATRICOLA  
IDENTIFICATION PLATE

TAV0	INFORMAZIONI GENERALI	GENERAL INFORMATION
TAV1	CARROZZERIA	BODY
TAV 2	COMPONENTI ELETTRICI	ELECTRICAL COMPONENTS
TAV 3	COMPONENTI IDRAULICI	HYDRAULIC COMPONENTS
TAV 4	BRACCI DI LAVAGGIO / RISCIAQUO	WASH/RINSE ARMS
TAV 5	POMPA DI SCARICO	DRAIN PUMP
TAV 6	ADDOLCITORE	WATER SOFTNER
TAV 7	PANNELLO DI CONTROLLO	CONTROL PANEL
TAV 8	POMPA DI LAVAGGIO	WASHING PUMP
TAV 9	DOSATORE BRILLANTANTE	RINSE AID DISPENSER
TAV 10	DOSATORE DETERSIVO	DETERGENT DISPENSER

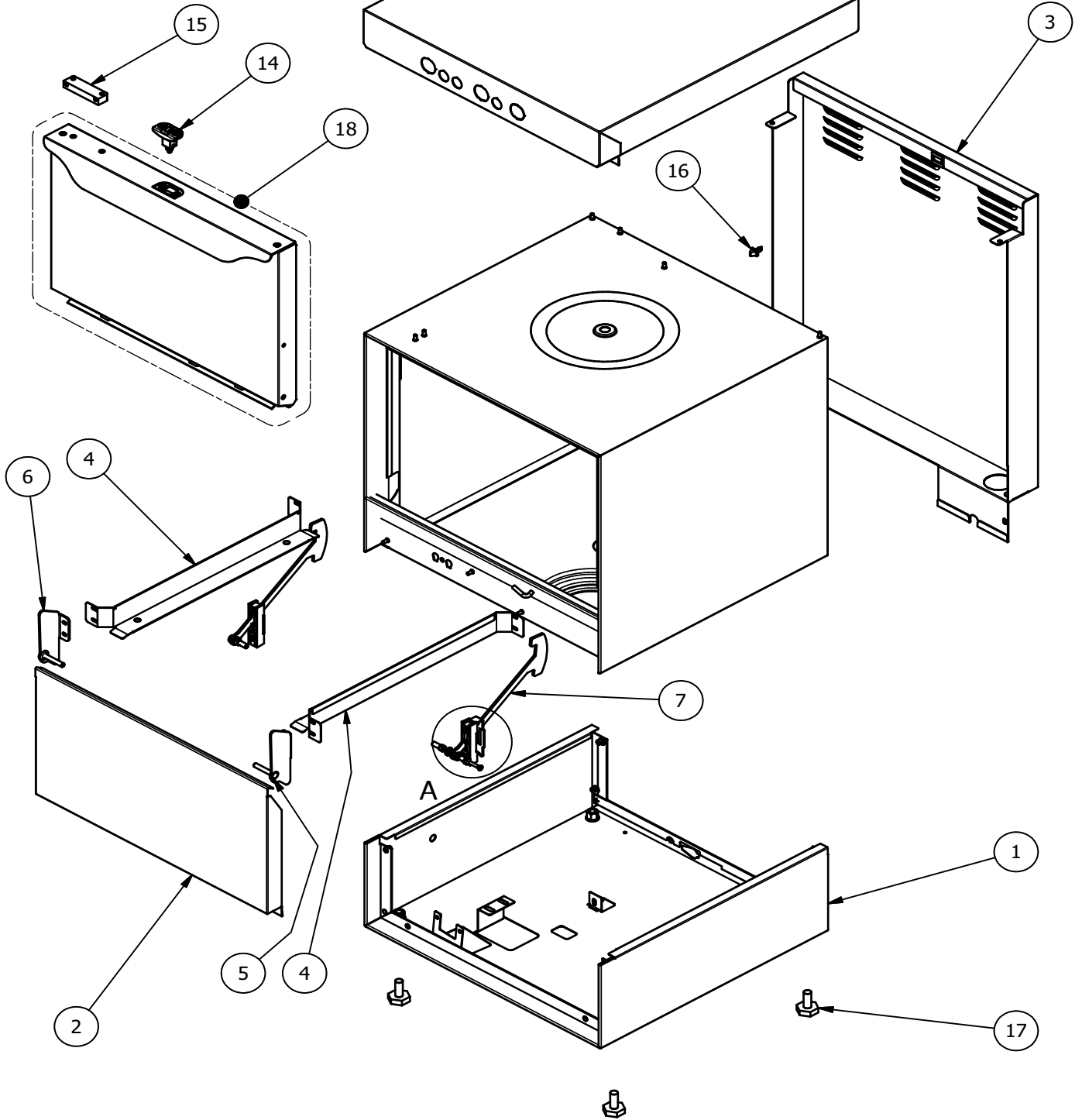
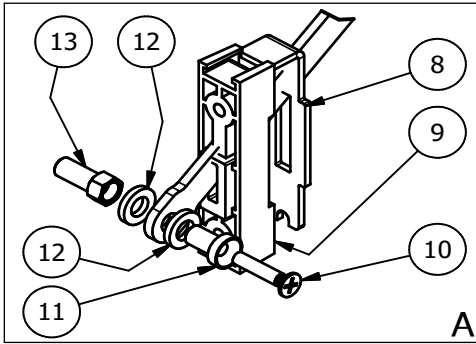


Management System  
ISO 9001:2008

www.tuv.com  
ID 9108624282



Os elementos deste desenho podem ser alterados sem aviso prévio.  
This drawing may be altered without previous notice.



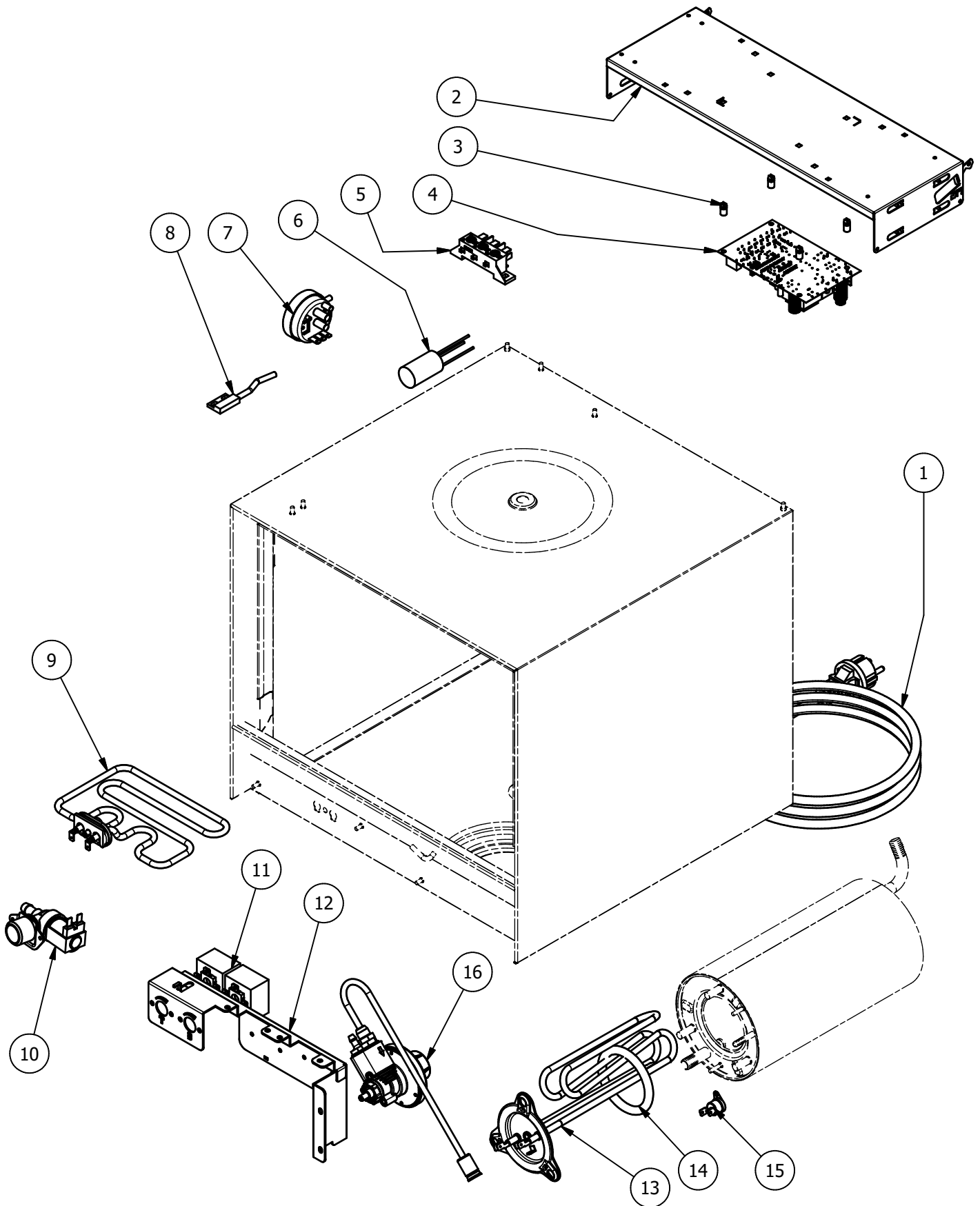
REV.01 (03/2023)	CARROZZERIA - BODY	TAV.1_2
---------------------	--------------------	---------

ELEM.	CODICE	DA/FROM MATR.	DESCRIZIONE	DESCRIPTION [EN]	U.M.
1	3006-0009		BASAMENTO	BASEMENT	No.
2	3014-0008		PANN. SOTTOPORTA	LOWER TRIM PANEL	No.
3	3012-0016		SCHIENALE	REAR PANEL	No.
4	3004-0011		SLITTA INT. DX - SX	RIGHT - LEFT INTERNAL SLIDE	No.
5	0166300002		ASS. STAFFA DX CERNIERA	RIGHT MOUNTAIN BRACKET ASSY	No.
6	0166400002		ASS. STAFFA SX CERNIERA	LEFT MOUNTAIN BRACKET ASSY	No.
7	1200100002		ASTA CERNIERA PORTA	DOOR TENSIONER	No.
8	0780100002		BATTUTA TIRANTE PORTA	BLOCK FOR DOOR TENSIONER	No.
9	1120600002		GUIDA TIRANTE PORTA	TENSIONER GUIDE	No.
10	1002-0002		VITE TCPS M4x20 INOX	SS M4x20 TCPS SCREW	No.
11	1870100002		PERNO CON TESTINA	LICHPIN	No.
12	0111200001		RONDELLA ASSE PORTA	DOOR ROD WASHER	No.
13	0430800001		PERNO TIRANTE	TENSIONING PIN	No.
14	0161100002		ASS. SCROCCO PORTA (*)	DOOR JACK ASSY (*)	No.
15	00005679		UNITA' MAGNETICA RETTANGOLARE (*)	MAGNETIC UNIT (*)	No.
16	00015239		CHIUSURA MASCHIO PER FISSAGGIO	MALE PLASTIC LATCH	No.
17	00006662		PIEDINO REGOLABILE (*)	ADJUSTABLE FOOT (*)	No.
18	8307-0031		ASS. PORTA COMPLETA	COMPLETE DOOR ASSY	No.

(\*) RICAMBI CONSIGLIATI / RECOMMENDED SPARE PARTS

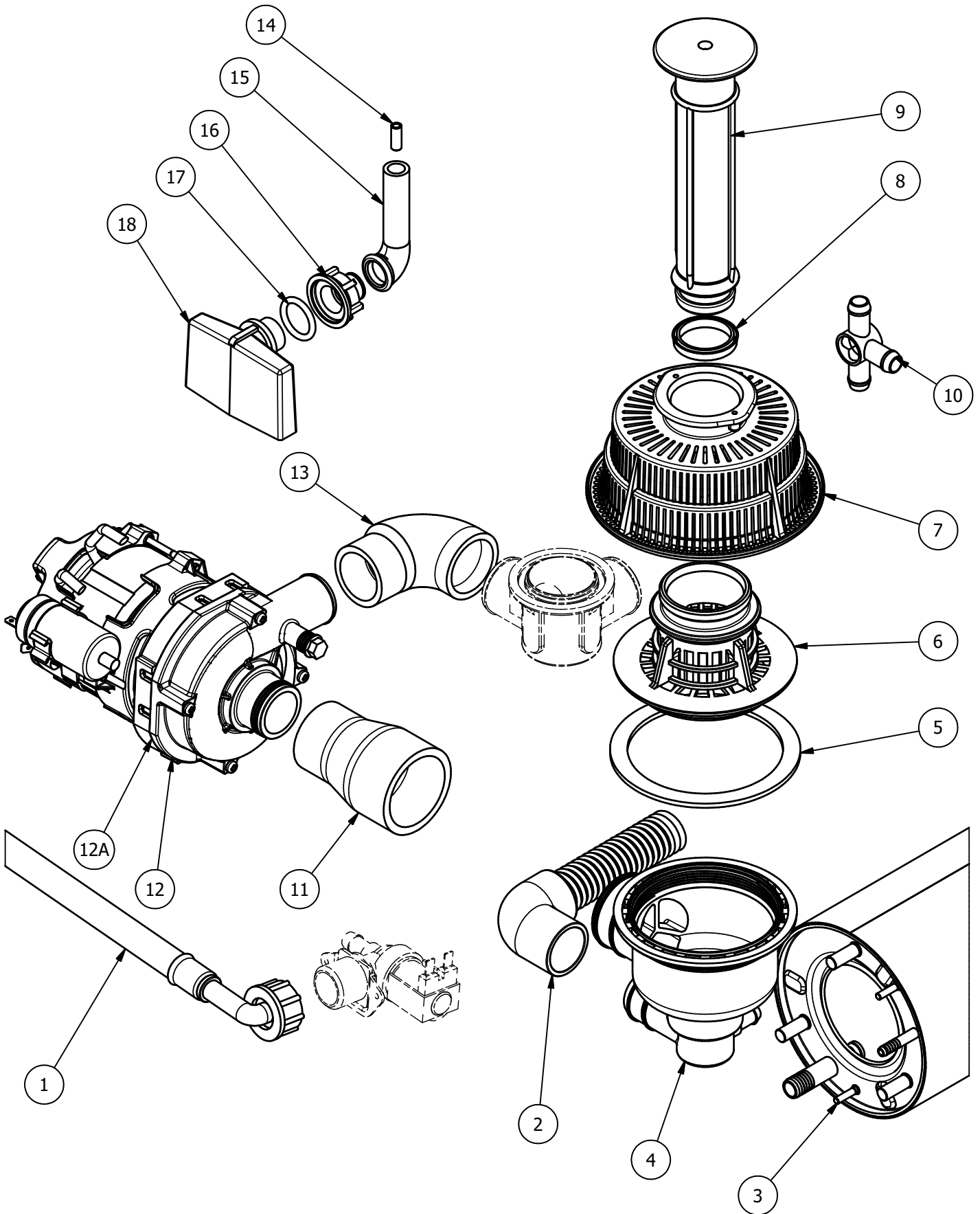


Os elementos deste desenho podem ser alterados sem aviso prévio.  
This drawing may be altered without previous notice.



ELEM.	CODICE	DA/FROM MATR.	DESCRIZIONE	DESCRIPTION [EN]	U.M.
1	00014685		CAVO ALIM. 3G1.5 H07RN-F 3m SCHUKO	POWER CABLE 3G1.5 H07RN-F 3m SCHUKO	No.
2	0740100001		SUPPORTO SCHEDA ELETTRONICA	ELECTRONIC CARDBOARD SUPPORT	No.
3	1020-0001		DISTANZIALE SCHEDA ELETTRONICA	SPACER FOR ELECTRONIC CARDBOARD	No.
4	00017092		SCHEDA ELETTRONICA (*)	ELECTRONIC CARDBOARD	No.
5	4055-0002		MORSETTIERA FV 110 MONOFASE	TERMINAL BOARD FV 110 MONOFASE	No.
6	00002779		FILTRO ANTIDISTURBO 0.47uF	FILTER 0.47uF	No.
7	00016403		PRESSOSTATO 28/12 (*)	PRESSURE SWITCH 28/12 (*)	No.
8	00012685		MICROINTERRUTTORE MAGNETICO (*)	MICRO SWITCH (*)	No.
9	0130400001		RESISTENZA 220-240V 2.4kW (*)	RESISTANCE 220-240V - 2.4kW (*)	No.
10	00000394		ELETTROVALVOLA SINGOLA (*)	SINGLE SOLENOID VALVE (*)	No.
11	00000359		TERMOSTATO DA 0 A 90°C (*)	THERMOSTAT FROM 0 TO 90°C (*)	No.
12	0231400003		SUPPORTO DOSATORI	DISPENSERS' SUPPORT	No.
13	4025-0001		RESISTENZA 220-240V 2.7kW (*)	RESISTANCE 220-240V 2.7kW (*)	No.
14	00000057		OR PER FLANGIA BOILER	OR FOR BOILER FLANGE	No.
15	00004913		TERMOSTATO DI SIC. A RIARMO. MANUALE (*)	MANUAL RESET SAFETY THERMOSTAT (*)	No.
16	8380-0001		ASS. DOS. BRILL. PRESS. DI RETE	WATER PRESS. RINSE AID ASSY	No.

(\*) RICAMBI CONSIGLIATI / RECOMMENDED SPARE PARTS



ELEM.	CODICE	DA/FROM MATR.	DESCRIZIONE	DESCRIPTION [EN]	U.M.
1	00000139		TUBO CARICO L= 2000mm	WATER INLET HOSE L= 2000mm	No.
2	0271500002		TUBO SCARICO L= 2500 mm	DRAIN HOSE L= 2000mm	No.
3	0160500005		ASS. BOILER 3Lt	BOILER ASSY 3 Lt	No.
4	2050100003		POZZETTO SCARICO ASPIRAZIONE	EXHAUST COCKPIT	No.
5	0080600004		GUARNIZIONE POZZETTO	EXHAUST COCKPIT GASKET	No.
6	0235200003		GHIERA GRUPPO FILTRANTE	THREADED RING FOR FILTERING GROUP	No.
7	0470900002		FILTRO GRUPPO FILTRANTE	FILTER OF FILTERING GROUP	No.
8	000017178		GUARNIZIONE TROPPOPIENO (*)	OVERFLOW GASKET (*)	No.
9	0320200007		TROPPOPIENO VASCA	TANK OVERFLOW	No.
10	00004120		DISTRIBUTORE A TRE VIE	THREE-WAY DISTRIBUTOR	No.
11	0220100002		MANICOTTO ASPIRAZIONE POMPA	SUCTION SLEEVE	No.
12	0040100002		POMPA LAVAGGIO 230V 50Hz	WASHING PUMP 230V 50Hz	No.
12A	6001-0006		POMPA LAVAGGIO 230V 60Hz	WASHING PUMP 230V 60Hz	No.
13	0220200003		MANICOTTO MANDATA POMPA	PUMP DELIVERY SLEEVE	No.
14	00002933		TUBETTO TENUTA GABBIA D'ARIA	AIR TRAP JUNCTION	No.
15	00002927		RACCORDO ANTI CONDENSA - GABBIA D'ARIA	FITTING	No.
16	00003536		DADO GABBIA D'ARIA	AIR TRAP NUT	No.
17	00002934		OR 4081	OR 4081	No.
18	0480100001		GABBIA D'ARIA VASCA (*)	TANK AIR TRAP (*)	No.

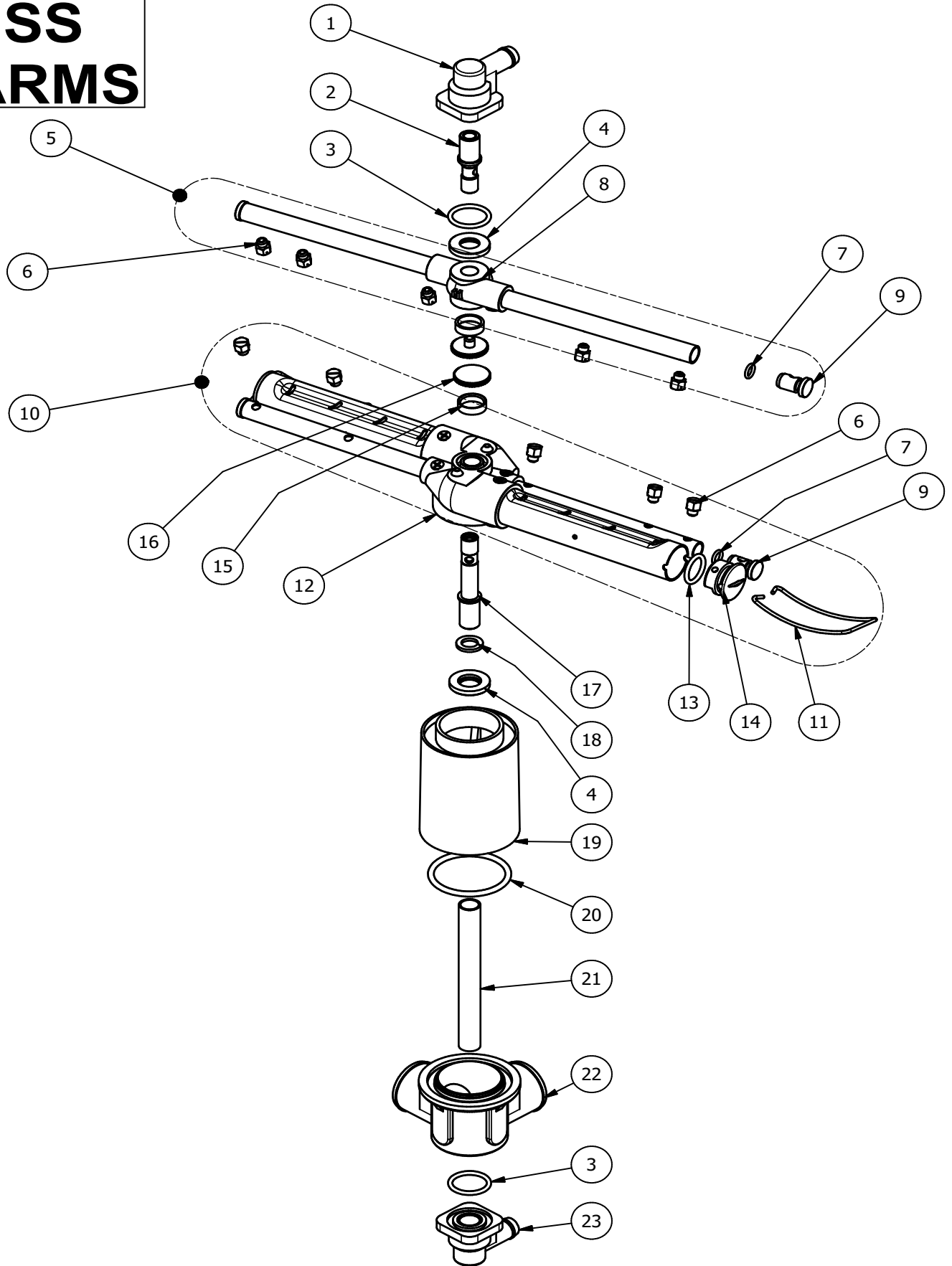
(\*) RICAMBI CONSIGLIATI / RECOMMENDED SPARE PARTS

#### MATERIALE DI CONSUMO - CONSUMABLE GOODS

CODICE	DESCRIZIONE	DESCRIPTION [EN]	Q.TY [m]
00006104	TUBO GOMMA 11.5X19 AIR WATER	RUBBER HOSE 11.5X19 FOR WATER CIRCUIT	5m
0101-0001	TUBO EPDM NERO d5X11	BLACK EPDM HOSE d5X11	1m
00002329	TUBO EPDM NERO d5X10	BLACK EPDM HOSE d5X10	2m



# SS ARMS





REV.01 (03/2023)	TYPE 3600 BRACCI DI LAVAGGIO E RISCIAQUO - WASHING AND RINSE ARMS	TAV.4_2
---------------------	--	---------

ELEM.	CODICE	DA/FROM MATR.	DESCRIZIONE	DESCRIPTION [EN]	U.M.
1	00010750		RACCORDO 90° M12x1	90° CONNECTION M12x1	No.
2	0430800002		PERNO FULCRO RISCIAQUO	RINSE THROUGH PIN	No.
3	00000025		OR 128	OR 128	No.
4	00004671		RONDELLA DI APPOGGIO	WASHER	No.
5	00004133		ASSIEME GIRANTE RISCIAQUO INOX	SS RINSE ARM ASSY	No.
6	00017155		UGELLO RISCIAQUO INOX (*)	SS RINSE NOZZLE	No.
7	00002531		OR 106	OR 106	No.
8	00001955		DISTRIBUTORE 2RP (*)	2RP DISTRIBUTOR (*)	No.
9	00002502		TAPPO RISCIAQUO	RINSE ARM CAP	No.
10	00016116		ASSIEME GIRANTE LAVAGGIO INOX	SS WASHING ARM ASSY	No.
11	00002654		MOLLA AD ARCHETTO	SPRING	No.
12	00001954		DISTRIBUTORE 4RP (*)	4RP DISTRIBUTOR (*)	No.
13	00000093		OR 121	OR 121	No.
14	00002650		TAPPO BRACCIO LAVAGGIO	WASHING ARM CAP	No.
15	00002808		ANELLO PTFE (*)	PTFE RING (*)	No.
16	00001133		VITE GORONATA INOX (*)	S.S. KNURLED SCREW (*)	No.
17	00002153		PERNO FULCRO LAVAGGIO E RISCIAQUO	WASHING AND RINSE THROUGH PIN	No.
18	00001173		RONDELLA PER GIRANTE (*)	WASHING ARM WASHER (*)	No.
19	00012193		COPRITIRANTE	FIXING PART COVER	No.
20	00001633		OR 147	OR 147	No.
21	00012996		TIRANTE	FIXING PART	No.
22	0330600001		DISTRIBUTORE MONOLAVAGGIO	SINGLE WASH DISTRIBUTOR	No.
23	00010620		RACCORDO 90° M13x1	90° CONNECTION M13x1	No.

(\*) RICAMBI CONSIGLIATI / RECOMMENDED SPARE PARTS



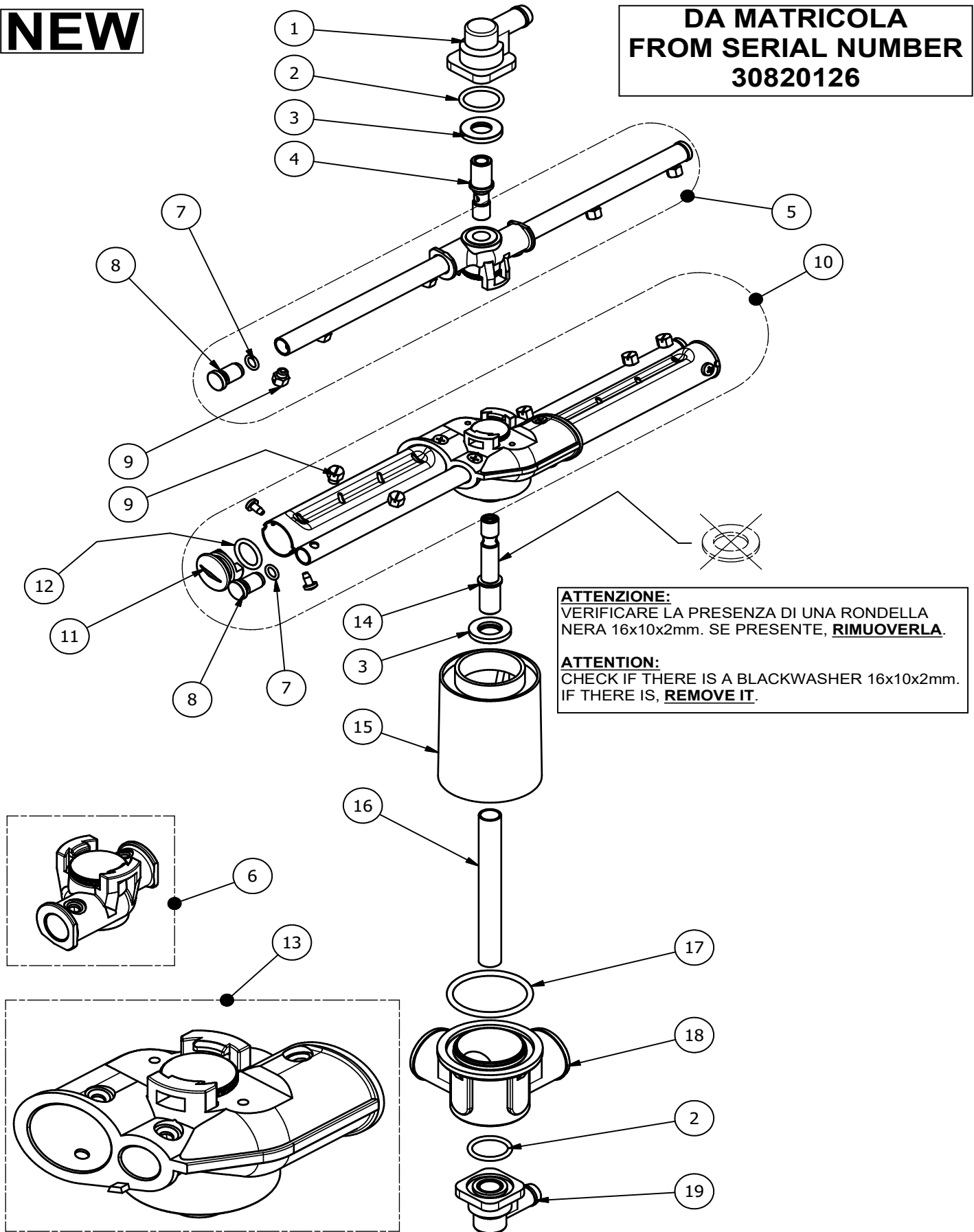
Management System  
ISO 9001:2008  
[www.tuv.com](http://www.tuv.com)  
ID 9108624282



Os elementos deste desenho podem ser alterados sem aviso prévio.  
This drawing may be altered without previous notice.

**NEW**

**DA MATRICOLA  
FROM SERIAL NUMBER  
30820126**

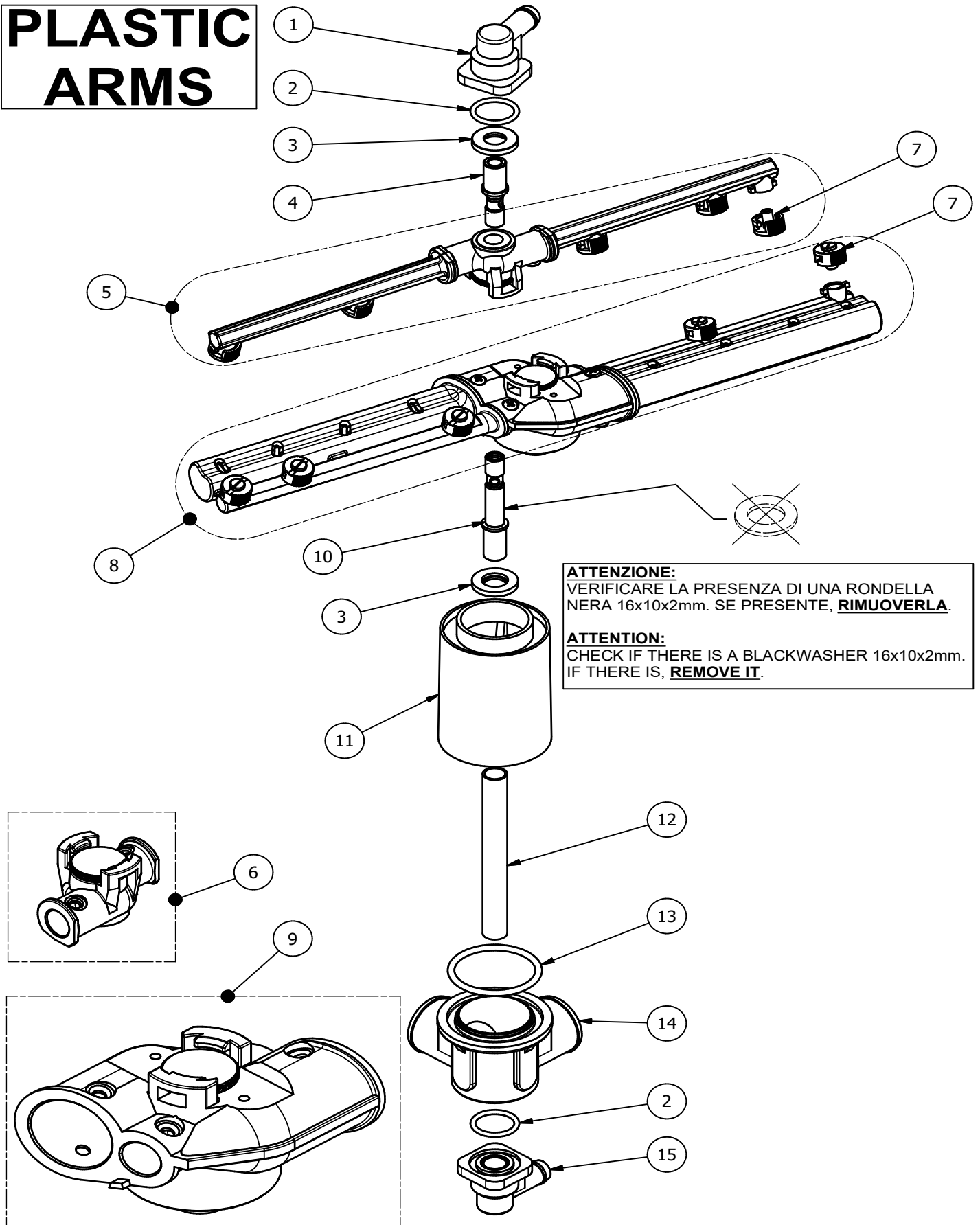


Os elementos deste desenho podem ser alterados sem aviso prévio.  
This drawing may be altered without previous notice.

ELEM.	CODICE	DA/FROM MATR.	DESCRIZIONE	DESCRIPTION [EN]	U.M.
1	00010750		RACCORDO 90° M12x1	90° CONNECTION M12x1	No.
2	00000025		OR 128	OR 128	No.
3	00004671		RONDELLA DI APPOGGIO	WASHER	No.
4	0430800002		PERNO FULCRO RISCIAQUO	RINSE THROUGH PIN	No.
5	8304-0027		ASSIEME GIRANTE RISCIAQUO INOX	SS RINSE ARM ASSY	No.
6	8380-0144		ASS. DISTRIBUTORE RISCIAQUO 2RP C/VITE	RINSE 2RP DISTRIBUTOR ASSY W/SCREW	No.
7	00002531		OR 106	OR 106	No.
8	00002502		TAPPO RISCIAQUO	RINSE ARM CAP	No.
9	00017155		UGELLO RISCIAQUO INOX	SS RINSE NOZZLE	No.
10	8304-0014		ASSIEME GIRANTE LAVAGGIO INOX	SS WASHING ARM ASSY	No.
11	00002650		TAPPO BRACCIO LAVAGGIO	WASHING ARM CAP	No.
12	00000093		OR 121	OR 121	No.
13	8380-0118		ASS. DISTRIBUTORE LAV. E RISC. CON VITE	WASHING AND RINSE DISTR. ASSY W/SCREW	No.
14	00002153		PERNO FULCRO LAVAGGIO E RISCIAQUO	WASHING AND RINSE THROUGH PIN	No.
15	00012193		COPRITIRANTE	FIXING PART COVER	No.
16	00012996		TIRANTE	FIXING PART	No.
17	00001633		OR 147	OR 147	No.
18	0330600001		DISTRIBUTORE MONOLAVAGGIO	SINGLE WASH DISTRIBUTOR	No.
19	00010620		RACCORDO 90° M13x1	90° CONNECTION M13x1	No.

(\*) RICAMBI CONSIGLIATI / RECOMMENDED SPARE PARTS

# PLASTIC ARMS



Os elementos deste desenho podem ser alterados sem aviso prévio.  
This drawing may be altered without previous notice.



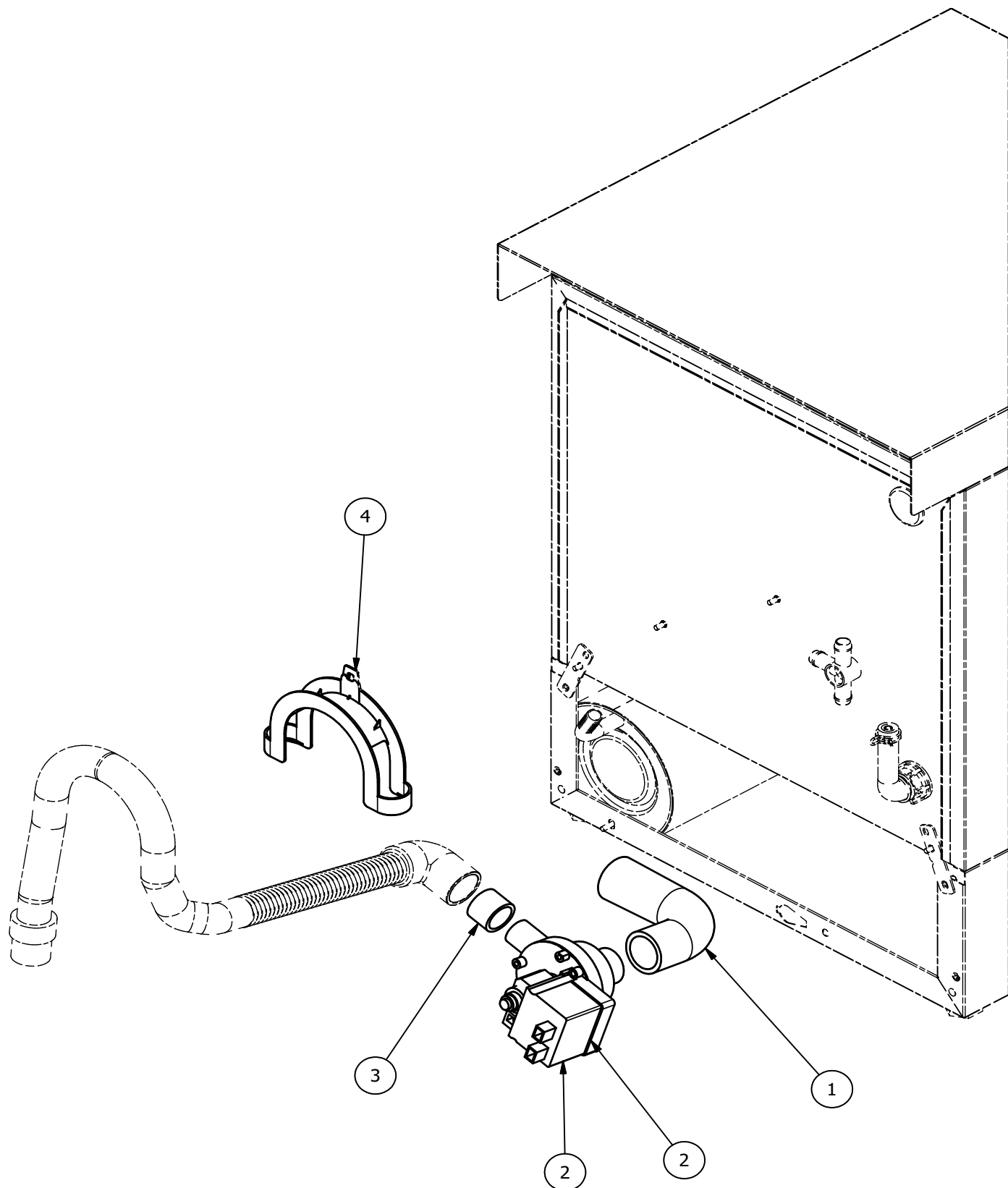
REV.01 (03/2023)	<b>TYPE 3600</b> BRACCI DI LAVAGGIO E RISCIAQUO - WASHING AND RINSE ARMS	TAV.4_6
---------------------	---	---------

ELEM.	CODICE	DA/FROM MATR.	DESCRIZIONE	DESCRIPTION [EN]	U.M.
1	00010750		RACCORDO 90° M12x1	90° CONNECTION M12x1	No.
2	00000025		OR 128	OR 128	No.
3	00004671		RONDELLA DI APPOGGIO	WASHER	No.
4	3065-0029		PERNO FULCRO RISCIAQUO	RINSE THROUGH PIN	No.
5	8304-0021		ASS. GIRANTE RISCIAQUO PLASTICA	PLASTIC RINSE ARM ASSY	No.
6	8380-0144		ASS. DISTRIBUTORE RISCIAQUO 2RP C/VITE	RINSE 2RP DISTRIBUTOR ASSY W/SCREW	No.
7	3032-0003		UGELLO RISCIAQUO PLASTICA	PLASTIC RINSE NOZZLE	No.
8	8304-0023		ASS. GIRANTE LAVAGGIO PLASTICA	PLASTIC WASH ARM ASSY	No.
9	8380-0118		ASS. DISTRIBUTORE LAV. E RISC. CON VITE	WASHING AND RINSE DISTR. ASSY W/SCREW	No.
10	3065-0028		PERNO FULCRO LAVAGGIO E RISCIAQUO	WASHING AND RINSE THROUGH PIN	No.
11	00012193		COPRITIRANTE	FIXING PART COVER	No.
12	00012996		TIRANTE	FIXING PART	No.
13	00001633		OR 147	OR 147	No.
14	0330600001		DISTRIBUTORE MONOLAVAGGIO	SINGLE WASH DISTRIBUTOR	No.
15	00010620		RACCORDO 90° M13x1	90° CONNECTION M13x1	No.

**(\*) RICAMBI CONSIGLIATI / RECOMMENDED SPARE PARTS**



Os elementos deste desenho podem ser alterados sem aviso prévio.  
This drawing may be altered without previous notice.



Management System  
ISO 9001:2008

www.tuv.com  
ID 9108624282



Os elementos deste desenho podem ser alterados sem aviso prévio.  
This drawing may be altered without previous notice.

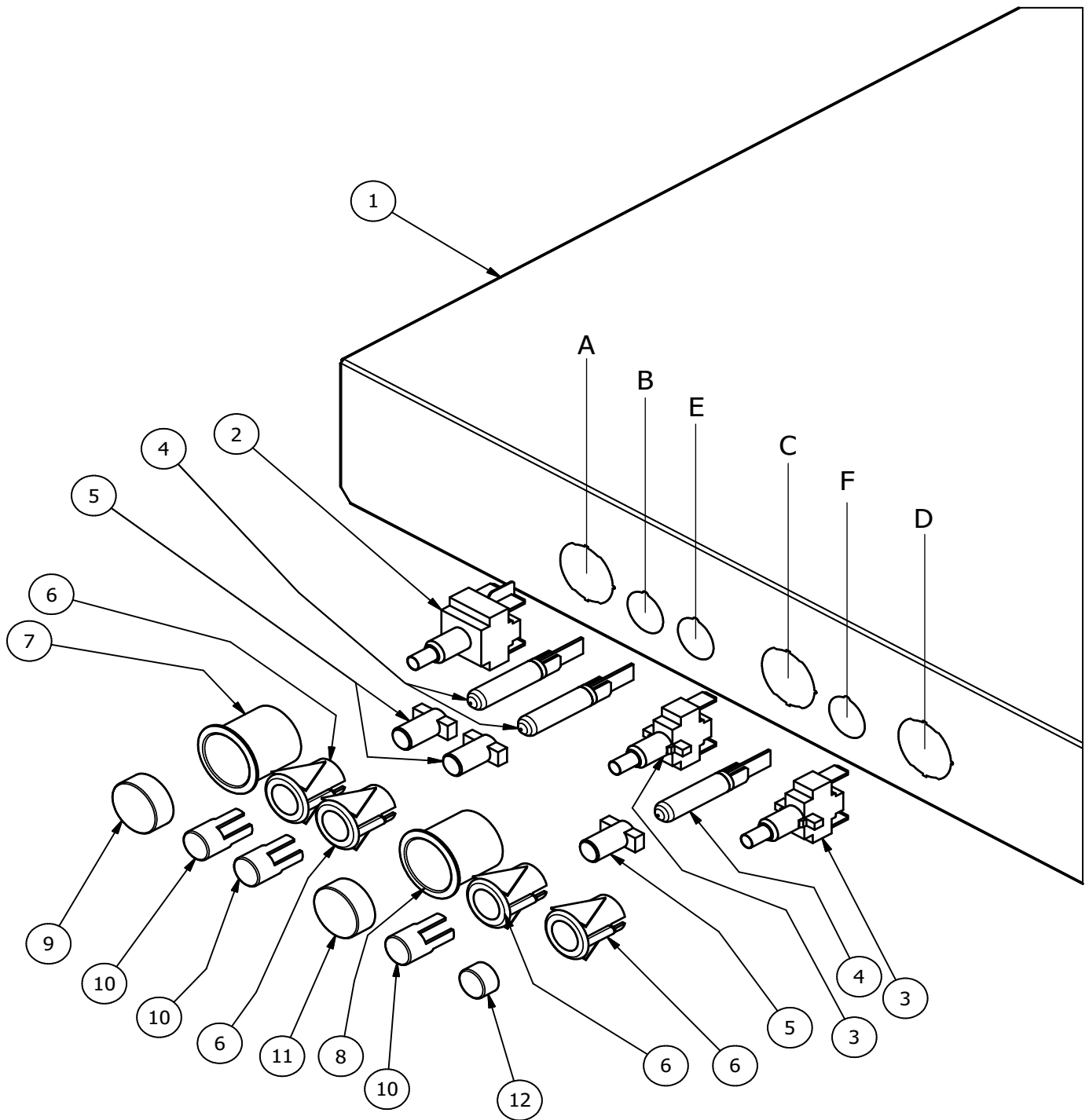
REV.01 (03/2023)	POMPA DI SCARICO - DRAIN PUMP	TAV.5_2
---------------------	-------------------------------	---------

ELEM.	CODICE	DA/FROM MATR.	DESCRIZIONE	DESCRIPTION [EN]	U.M.
1	00004985		MANICOTTO IN GOMMA	RUBBER HOSE	No.
2	00009563		POMPA DI SVUOTAMENTO 230V 50Hz (*)	DRAIN PUMP 230V 50Hz (*)	No.
2A	6006-0001		POMPA DI SVUOTAMENTO 230V 60Hz (*)	DRAIN PUMP 230V 60Hz (*)	No.
3	3040-0002		TUBO EPDM	EPDM HOSE	No.
4	00016395		CURVA PER SUPPORTO TUBO DI SCARICO	DRAIN HOSE SUPPORT	No.

(\*) RICAMBI CONSIGLIATI / RECOMMENDED SPARE PARTS



Os elementos deste desenho podem ser alterados sem aviso prévio.  
This drawing may be altered without previous notice.



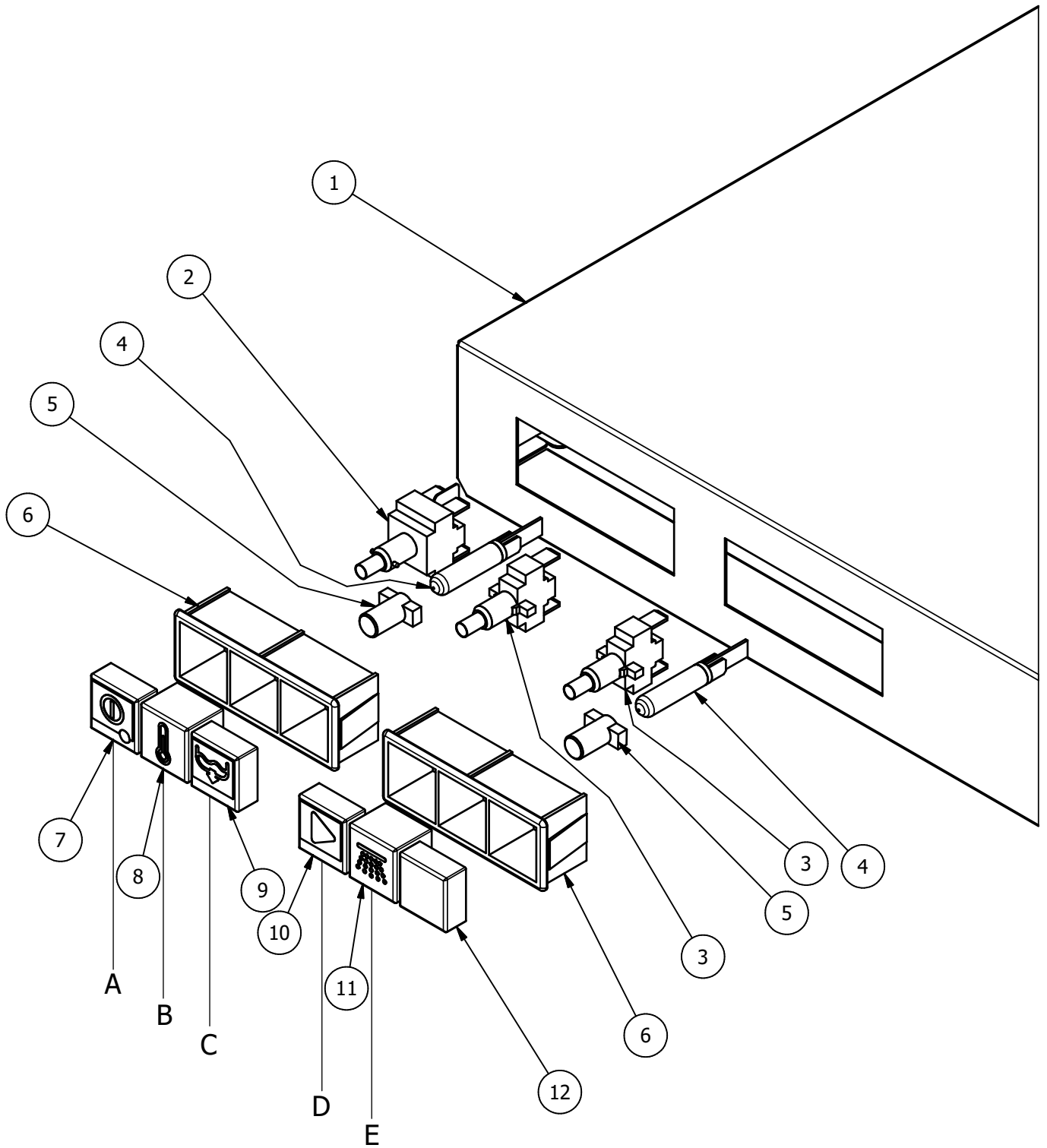
A	ON-OFF	ON-OFF
B	SPIA PRESENZA TENSIONE	LIGHT: THE MACHINE IS WORKING
C	START CICLO	START CYCLE
D	PULSANTE POMPA DI SCARICO (OPT)	DRAIN PUMP BUTTON (OPT)
E	SPIA MACCHINA PRONTA	LIGHT: MACHINE READY TO WASHING
F	SPIA CICLO	LIGHT: TURS ON DURING THE CYCLE

ELEM.	CODICE	DA/FROM MATR.	DESCRIZIONE	DESCRIPTION [EN]	U.M.
1	3010-0024		ASSIEME CAPPOTTINA	UPPER COVER ASSY	No.
3	00004322		PULSANTE CM-NA (*)	CM-NO PUSH BUTTON (*)	No.
2	00004323		INTERRUTTORE CM-NA BIPOLARE (*)	CM-NO TWO-POLE SWITCH (*)	No.
4	00004051		LAMPADA TRASPARENTE 230V (*)	TRANSPARENT INDICATOR 230V (*)	No.
5	00004045		STRUTTURA GUIDA (*)	LIGHT INDICATOR HOLDER (*)	No.
6	00017650		SUPPORTO D.16 GRIGIO SCURO	D.16 DARK GREY SUPPORT	No.
7	00017778		SUPPORTO D.25 GRIGIO SCURO	D.25 DARK GREY SUPPORT	No.
8	2005-0001		SUPPORTO D.25 BLU	D.25 BLUE SUPPORT	No.
9	00017777		TASTO GOFFRATO D.25 GRIGIO SCURO	D.25 DARK GREY EMBOSSED BUTTON	No.
10	00004049		GEMMA NEUTRA	NEUTRAL COVER FOR INDICATOR	No.
11	2010-0001		TASTO GOFFRATO D.25 BLU	D.25 BLUE EMBOSSED BUTTON	No.
12	00017649		TASTO GOFFRATO D.16 GRIGIO SCURO	D.16 DARK GREY EMBOSSED BUTTON	No.

(\*) **RICAMBI CONSIGLIATI / RECOMMENDED SPARE PARTS**



Os elementos deste desenho podem ser alterados sem aviso prévio.  
This drawing may be altered without previous notice.



A	ON-OFF	ON-OFF
B	SPIA MACCHINA PRONTA	LIGHT: MACHINE READY TO WASHING
C	PULSANTE POMPA DI SCARICO (OPT)	DRAIN PUMP BUTTON (OPT)
D	START CICLO	START CYCLE
E	SPIA CICLO	LIGHT: TURS ON DURING THE CYCLE

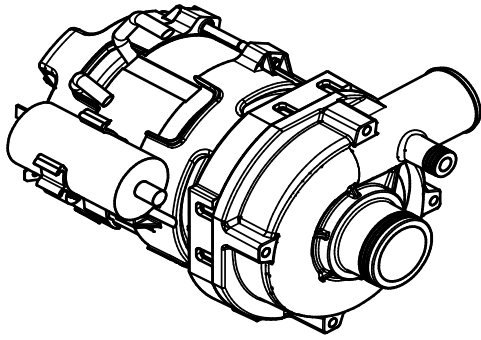
<b>REV.01 (03/2023)</b>	PANNELLO COMANDI - CONTROL PANEL	<b>TAV.7_4</b>
-----------------------------	----------------------------------	----------------

ELEM.	CODICE	DA/FROM MATR.	DESCRIZIONE	DESCRIPTION [EN]	U.M.
1	3010-0030		ASSIEME CAPPOTTINA	UPPER COVER ASSY	No.
2	2009-0001		INTERRUTTORE CM-NA BIPOLARE (*)	CM-NO TWO-POLE SWITCH (*)	No.
3	00004322		PULSANTE CM-NA (*)	CM-NO PUSH BUTTON (*)	No.
4	00004051		LAMPADA TRASPARENTE 230V (*)	TRANSPARENT INDICATOR 230V (*)	No.
5	00004045		STRUTTURA GUIDA (*)	LIGHT INDICATOR HOLDER (*)	No.
6	00006461		SUPPORTO TASTI E INDICATORI	BUTTON AND INDICATOR SUPPORT	No.
7	2010-0004		TASTO ON-OFF	ON-OFF BUTTON	No.
8	2012-0001		GEMMA NEUTRA	NEUTRAL COVER FOR INDICATOR	No.
9	2010-0005		TASTO POMPA SCARICO	DRAIN PUMP BUTTON	No.
10	2010-0006		TASTO START	START BUTTON	No.
11	2012-0002		GEMMA LAVAGGIO	NEUTRAL COVER FOR INDICATOR OF WASH	No.
12	2010-0010		TAPPO	CAP	No.

**(\*) RICAMBI CONSIGLIATI / RECOMMENDED SPARE PARTS**

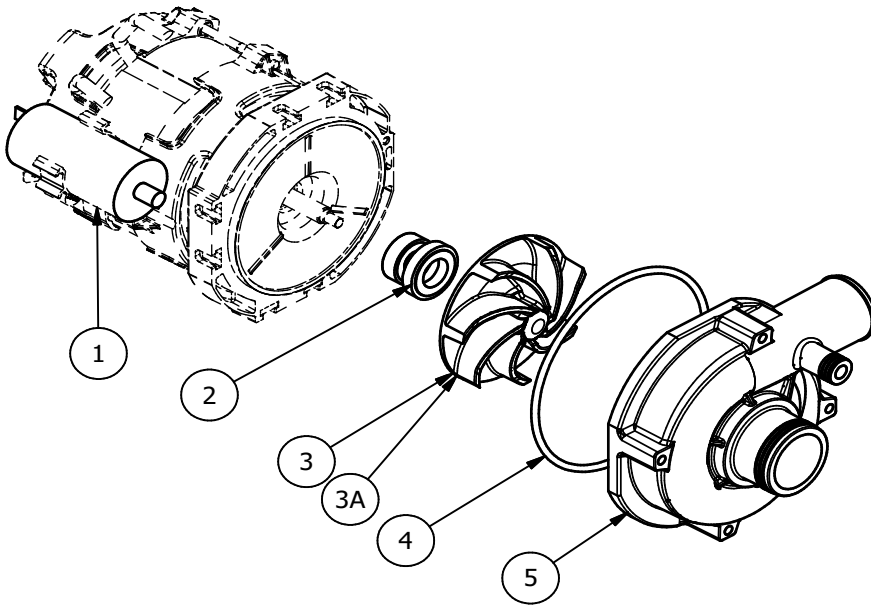


Os elementos deste desenho podem ser alterados sem aviso prévio.  
This drawing may be altered without previous notice.

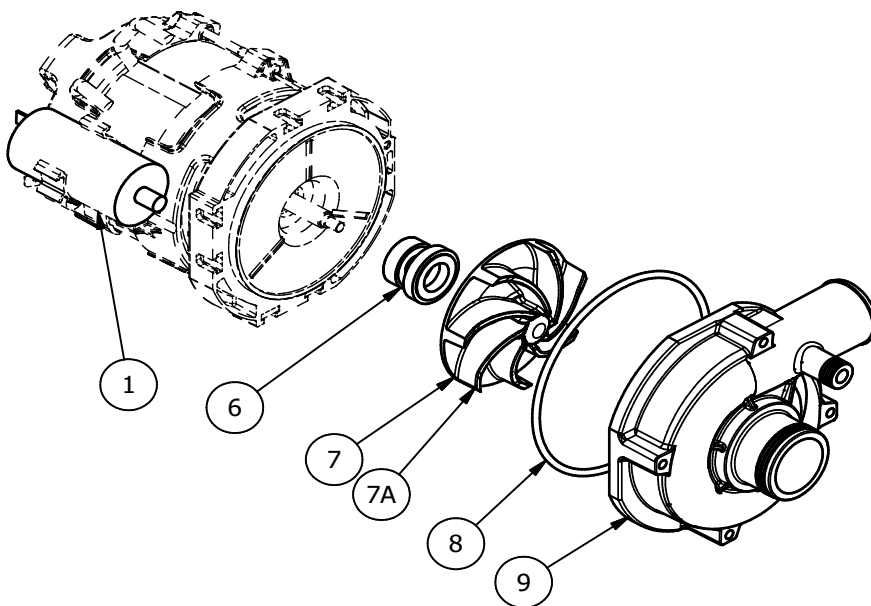


0040100002	50Hz
6001-0006	60Hz

POMPA "ARISTARCO" - "ARISTARCO" PUMP



POMPA "OLYMPIA" - "OLYMPIA" PUMP



ELEM.	CODICE	DA/FROM MATR.	DESCRIZIONE	DESCRIPTION [EN]	U.M.
1	2080-0002		CONDENSATORE 5uF	CAPACITOR 5uF	No.
1A	2080-0004	83510001	CONDENSATORE 6.3uF	CAPACITOR 6.3uF	No.
2	8395-0010		KIT TENUTA ROTANTE ARISTARCO	SEAL KIT ARISTARCO	No.
3	8304-0005		GIRANTE POMPA ARISTARCO 50Hz	IMPELLER ARISTARCO 50Hz	No.
3A	8304-0013		GIRANTE POMPA ARISTARCO 60Hz	IMPELLER ARISTARCO 60Hz	No.
4	2060-0001		GUARNIZIONE POMPA ARISTARCO	GASKET FOR ARISTARCO PUMP	No.
5	2070-0001		CHIOCCIOLA POMPA ARISTARCO	CASING FOR ARISTARCO PUMP	No.
6	8395-0015		KIT TENUTA ROTANTE - OLYMPIA	SEAL KIT - OLYMPIA	No.
7	2068-0001		GIRANTE POMPA OLYMPIA 50Hz	IMPELLER OLYMPIA 50Hz	No.
7A	8304-0040		GIRANTE POMPA OLYMPIA 60Hz	IMPELLER OLYMPIA 60Hz	No.
8	00014574		GUARNIZIONE POMPA OLYMPIA	GASKET FOR OLYMPIA PUMP	No.
9	00014572		CHIOCCIOLA POMPA OLYMPIA	CASING FOR OLYMPIA PUMP	No.

**(\*) RICAMBI CONSIGLIATI / RECOMMENDED SPARE PARTS**